

Comune di Pontassieve

Provincia di Firenze

Variante al P.R.G.S e al R.U. Ampliamento Area Estrattiva "Momo" in località Santa Brigida

DATA	GIUGNO 2008	DESCRIZIONE	TAV.
AGG.		RELAZIONE GEOLOGICO TECNICA	R-G
SCALA:			

Committenti:



CONSORZIO PIETRA DI SANTA BRIGIDA
Macigno di Monte Senario

Presidente: Sig. Gabriele Raggi

Strada vicinale del Fornellaccio
50065 S. Brigida - Pontassieve

Immobiliare Agricola "Le Falle" sas
di Niccolò Rangoni

Via di Valle 2
50014 Fiesole

Sig. Alfredo Faini

Via del Cimitero 5
50065 S. Brigida - Pontassieve

Consulenza naturalistico-ambientale:



Dott.ssa Viviana Cherici
Dott. Alberto Chiti Batelli

NEMO Nature Environment Management Operators Srl
Piazza D'Azeglio 11 - 50121 Firenze
tel 055.24.66.002 fax 055.24.37.18
www.nemoambiente.com

Consulenza geologica e rilievi topografici:

S.T.G. Studio Tecnico Geologico
Dott. Geol. Pellegrino Innocenti
via Brunelleschi, 5 - 50065 Pontassieve (FI)
tel. 055.83.23.113 e-mail: stg@centroin.it

Dott. Geol. Enrico Focardi
via Brunelleschi, 5 - 50065 Pontassieve (FI)
tel. 055.83.16.307 e-mail: enfogeo@libero.it

**"GEOMETRI
ASSOCIATI"**

Geom. Emanuele Corelli
Geom. Paolo Innocenti
Geom. Alessio Vaggelli

VIA ARETINA 4 - 50065 PONTASSIEVE
TEL/FAX 055.83.15.477
E-MAIL geocoin@technet.it

Consulenza ambientale:



Dott. Franco Di Salvatore

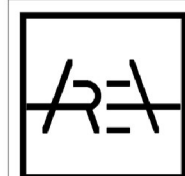
Ing. Simone Bongiani

Geol. Federica Bencini

pH S.r.l. - Analisi e Consulenze

Via Bramante 10/12, 50020 - Tavarnelle in Val di Pesa - Loc. Sambuca (FI),
Tel. +39 055 80677 Fax +39 055 8067850, Partita IVA 01964230484

Consulenza paesaggistica:



AREA Architetture Studio Associato
Massimo Alajmo Architetto - Paola Venturi Architetto Paesaggista

Loc. Mucciano 50/a - 50032 Borgo S. Lorenzo (FI) - tel. e fax. 055.84.08.007
Corso Roma 246 - 05020 Avigliano Umbro (Tr) - tel. e fax. 0744.93.36.79

partita i.v.a. e c.f. 04362420483

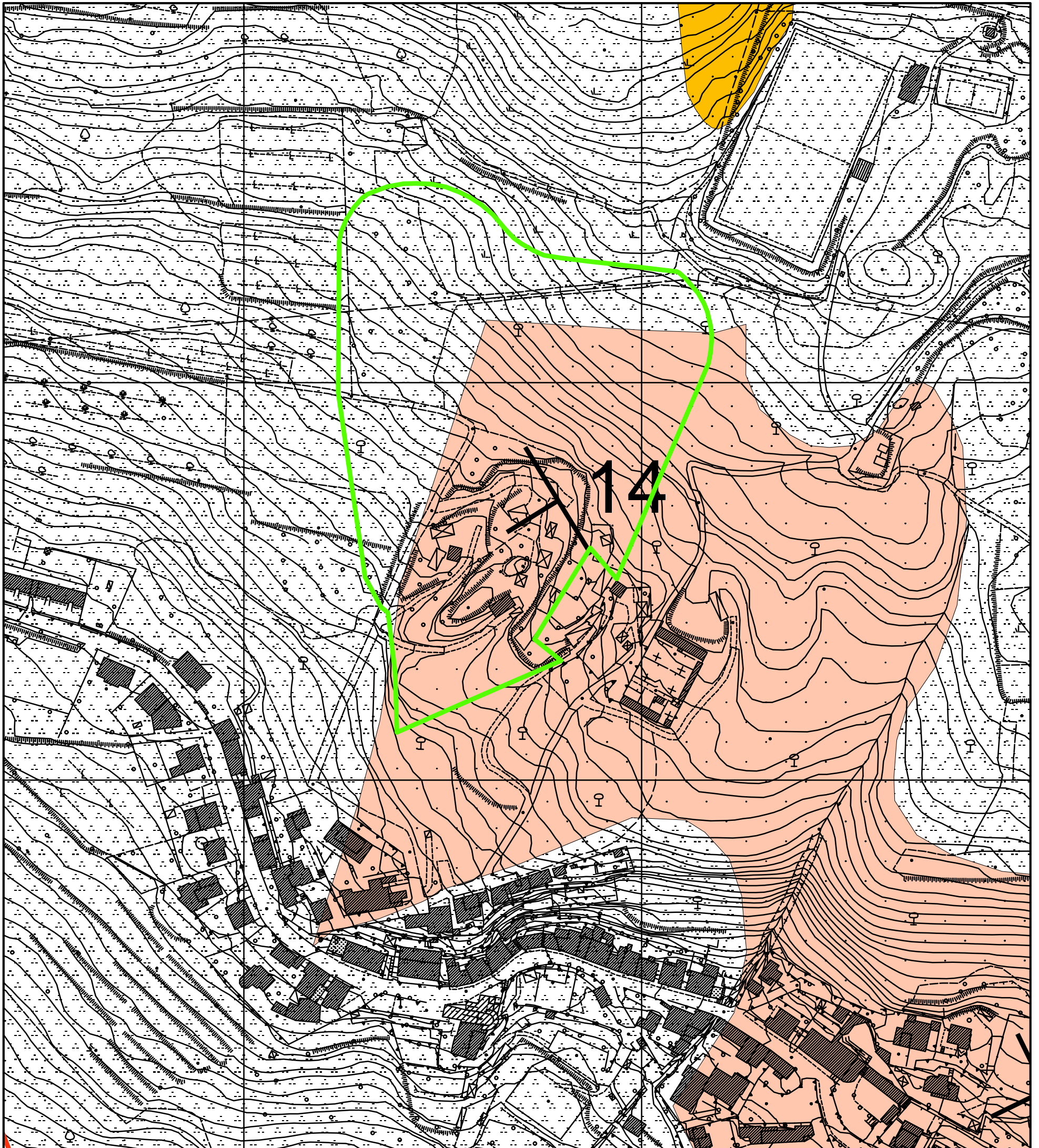
e-mail: areaarch@tin.it





Progettazione e pianificazione
del paesaggio

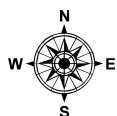



2000
paesaggio
www.paesaggio2000.it
Firenze

CARTA GEOLOGICA



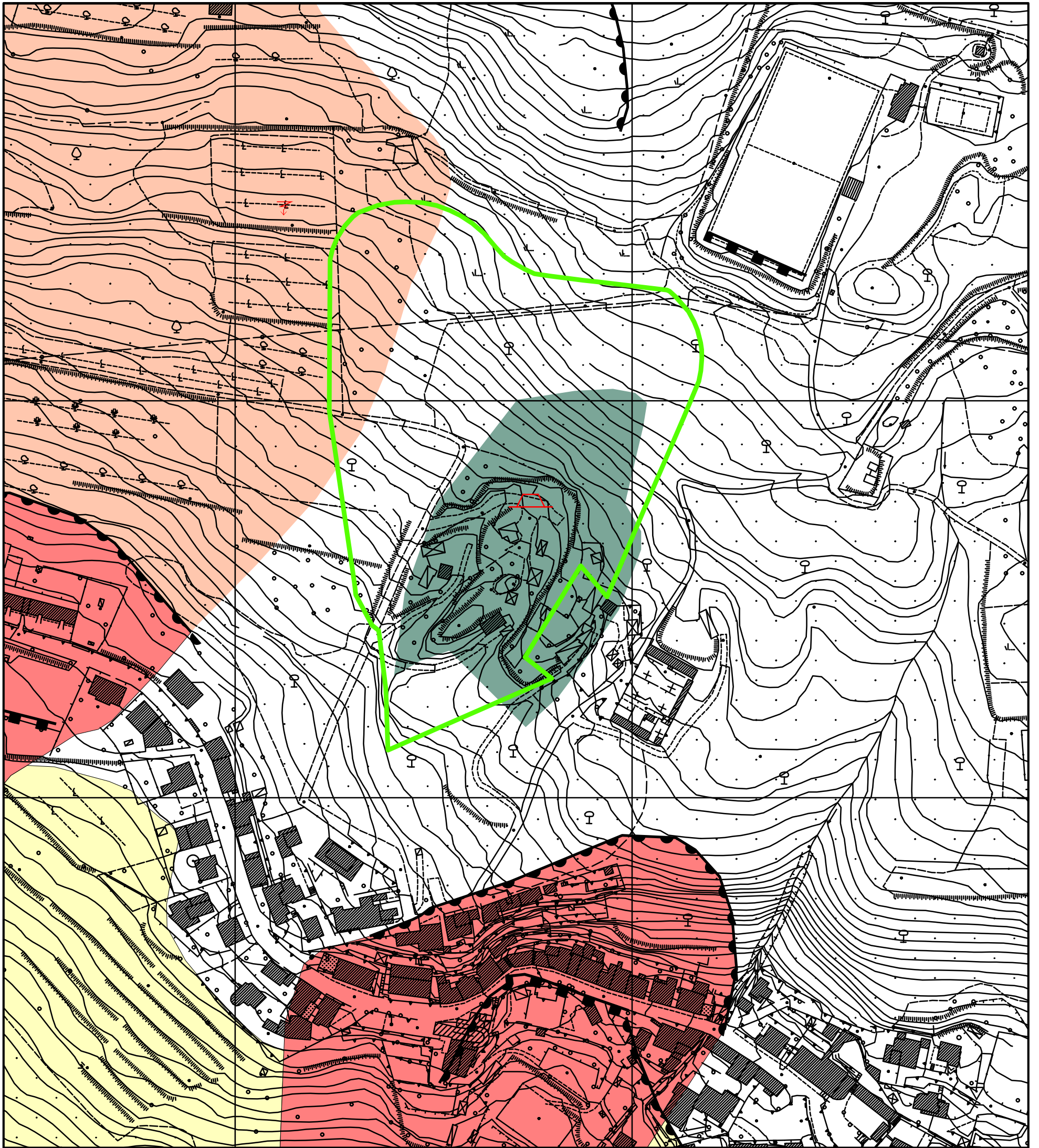
Legenda	
	Proposta presentata dal Consorzio S. Brigida
	d - Copertura detritica
	SEN - Arenarie di Monte Senario
	SNE - Calcari e breccie di Monte Senario



04,59 18 27 36
 Meters

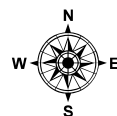
Elaborato n° 1

CARTA GEOMORFOLOGICA



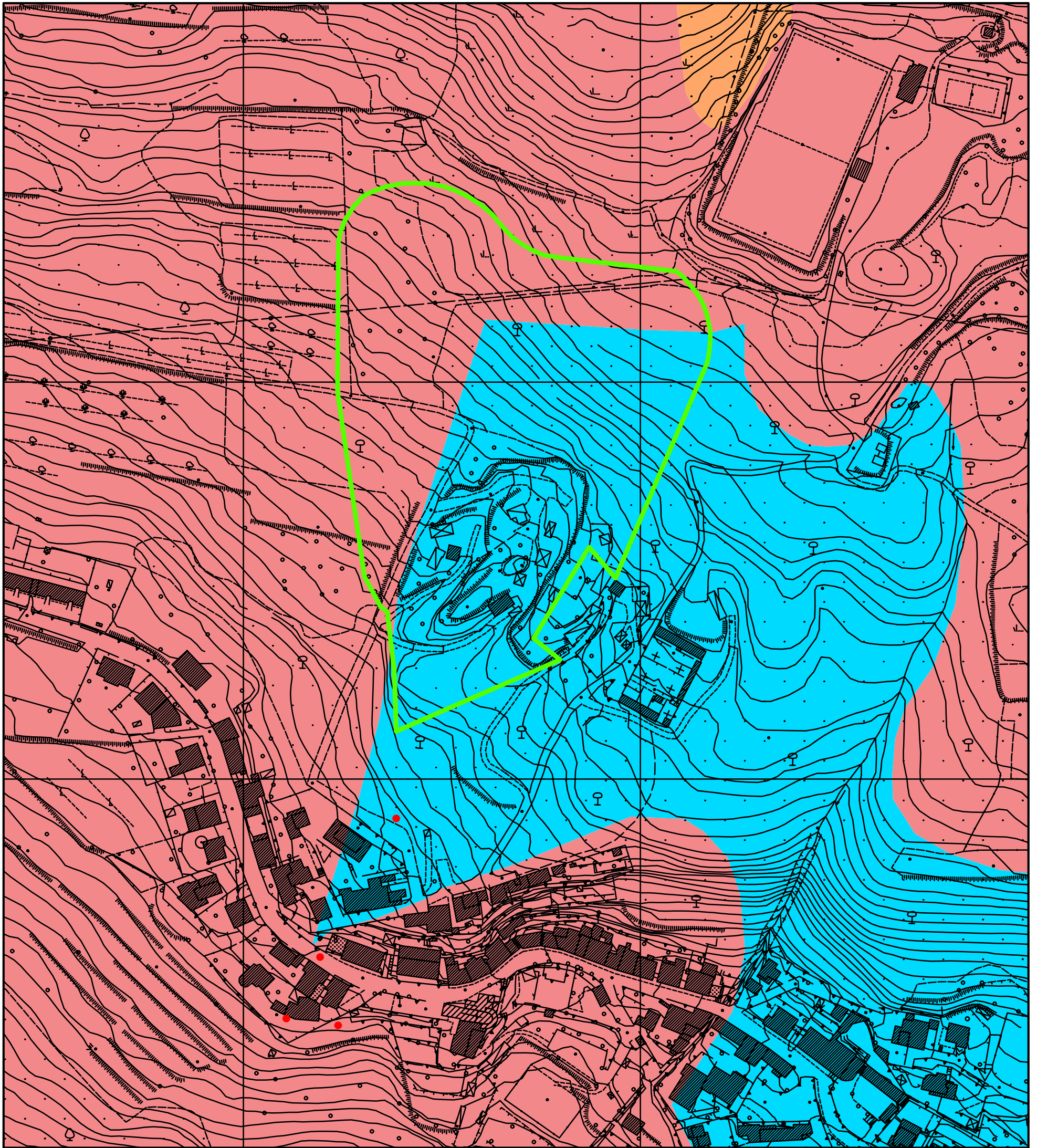
Legenda	
	Proposta presentata dal Consorzio S. Brigida
GEOMORFOLOGIA	
	Cava inattiva
	Area soggetta ad erosione superficiale
	Corpo di frana attiva
	Corpo di frana quiescente
	Corona di frana
	Scarpata antropica
	Scarpata inattiva
	Cava
	Soliflusso

0 5 10 20 30 40
Meters




Elaborato n°2

CARTA LITOTECNICA





Legenda


 Proposta presentata dal Consorzio S. Brigida

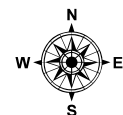
 Sondaggio


UNITA' LITOLOGICHE

 A1 - Materiali costituiti da elementi lapidei di pezzatura varia in matrice prevalentemente siltoso-sabbiosa.

 D1 - Rocce stratificate e strutturalmente ordinate costituite da alternanza di litotipi lapidei arenacei prevalenti e litotipi argillitico-siltitici.

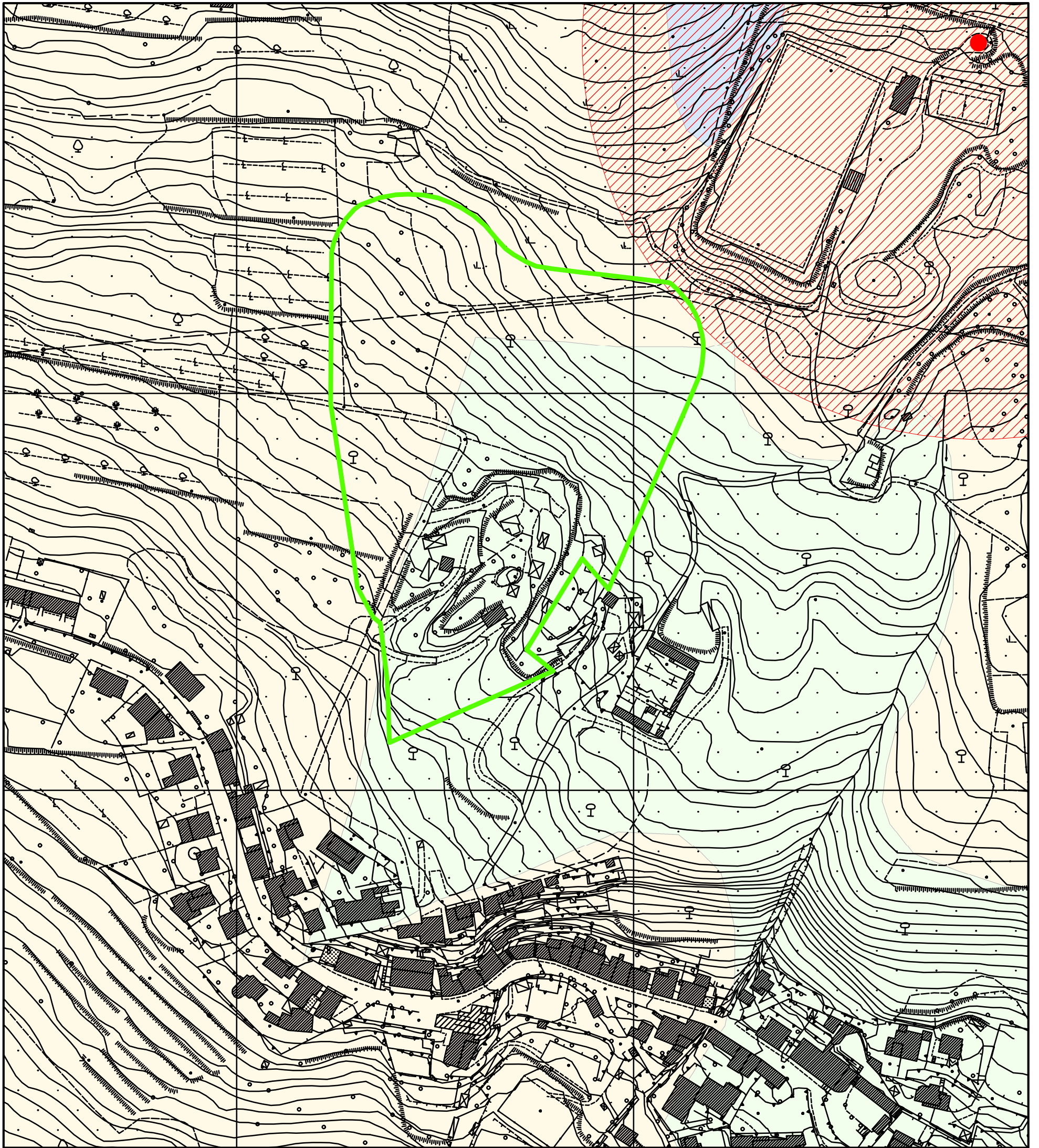
 E - Rocce stratificate e strutturalmente ordinate costituite da alternanza di litotipi lapidei calcarei, calcareo-marnosi e calcarenitici con litotipi argillitici e marnosi.



0 5 10 20 30 40
 Meters

Elaborato n°3

CARTA IDROGEOLOGICA

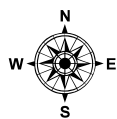


Legenda

- Pozzo
- Buffer pozzo
- Proposta presentata dal Consorzio S. Brigida

Idrogeologia

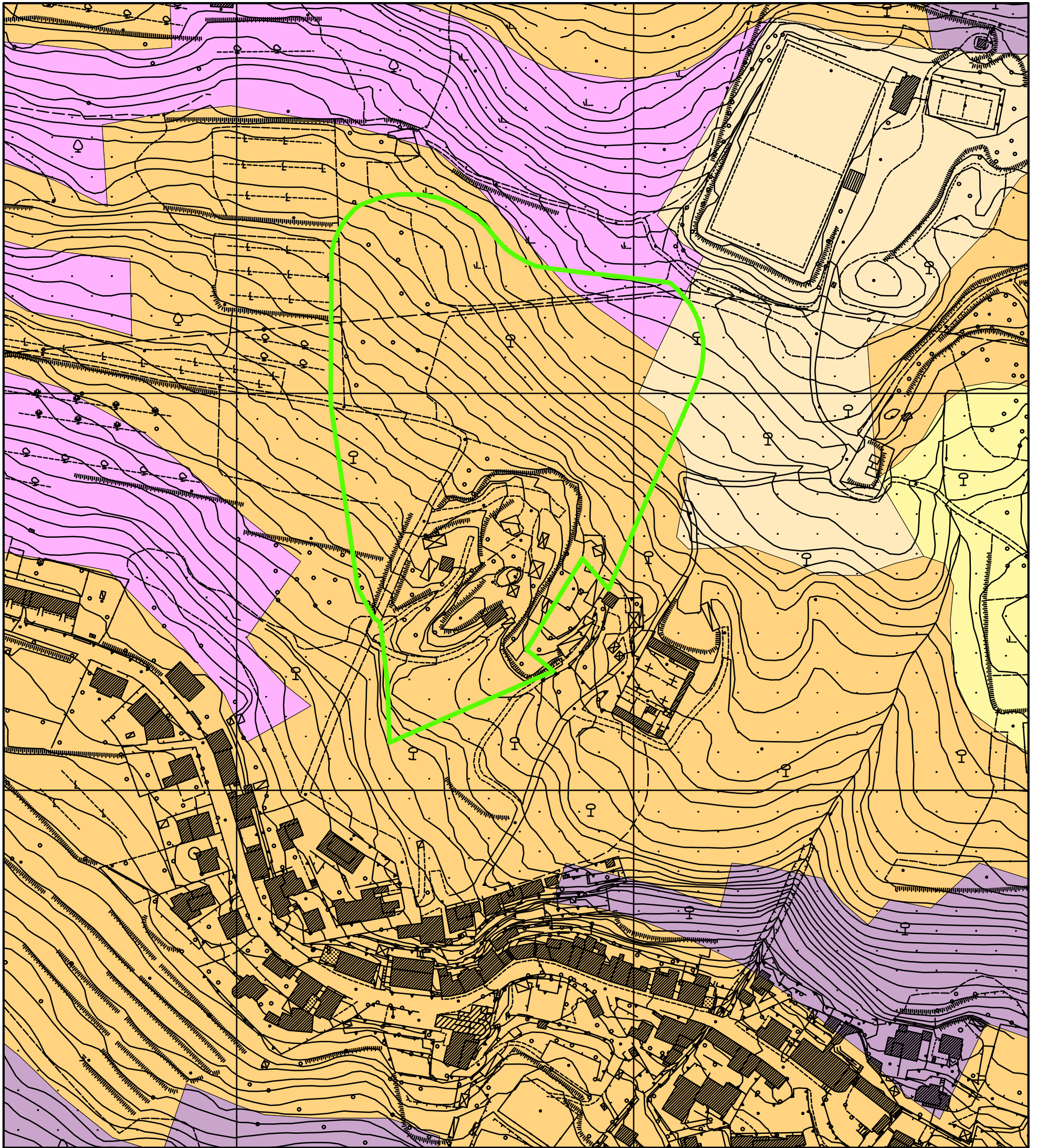
- Permeabilità primaria medio-alta
- Permeabilità secondaria media
- Permeabilità secondaria bassa o impermeabile



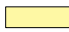




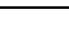
0 5 10 20 30 40
 Meters

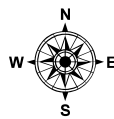
Elaborato n°4


CARTA DELLE PENDENZE



Legenda

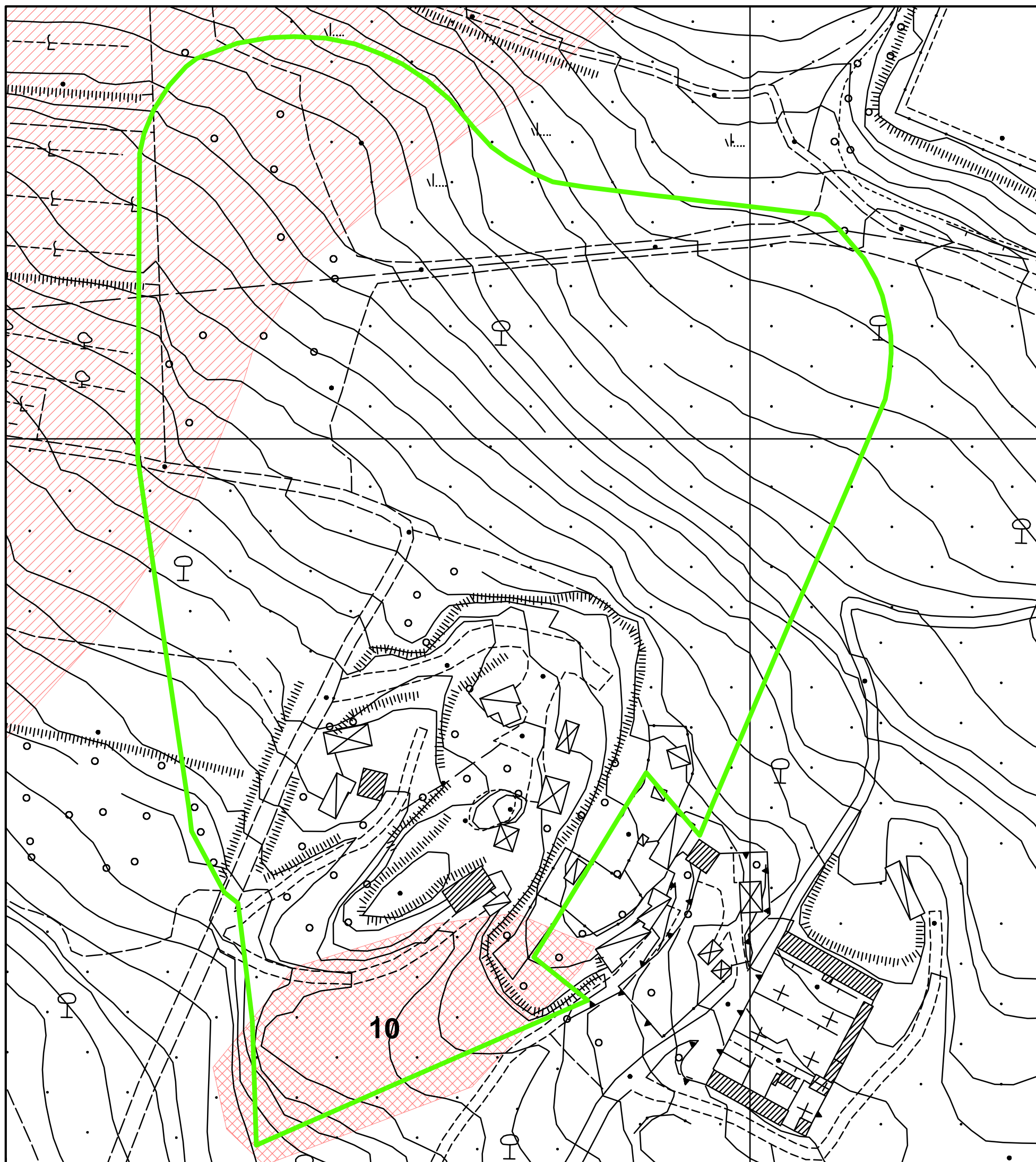
	2 - Tra 5% e 10%
	3 - Tra 10% e 15%
	4 - Tra 15% e 25%
	5 - Tra 25% e 35%
	6 - Maggiore del 35%
	Proposta presentata dal Consorzio S. Brigida






0 5 10 20 30 40
 Meters

Elaborato n°5

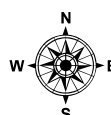
CARTA DELLE ZONE ZMPSL



Legenda

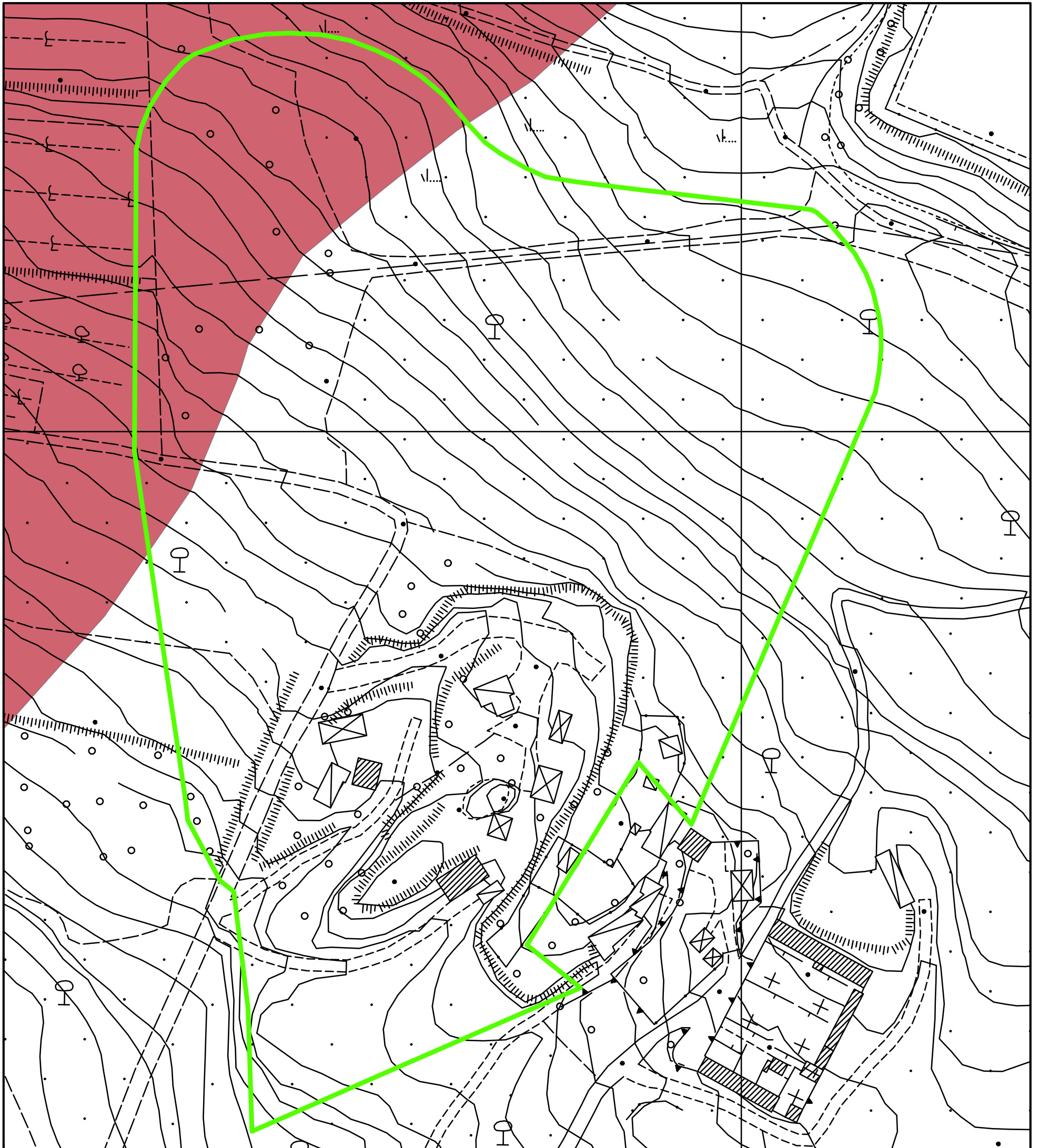
-  Proposta presentata dal Consorzio S. Brigida
-  10 - Area detritica
-  Corpo di frana quiescente



0 4 8 16 24 32
Meters

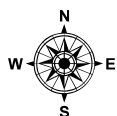



Elaborato n°6

CARTA DELLA PERICOLOSITA' GEOLOGICA DA FRANA



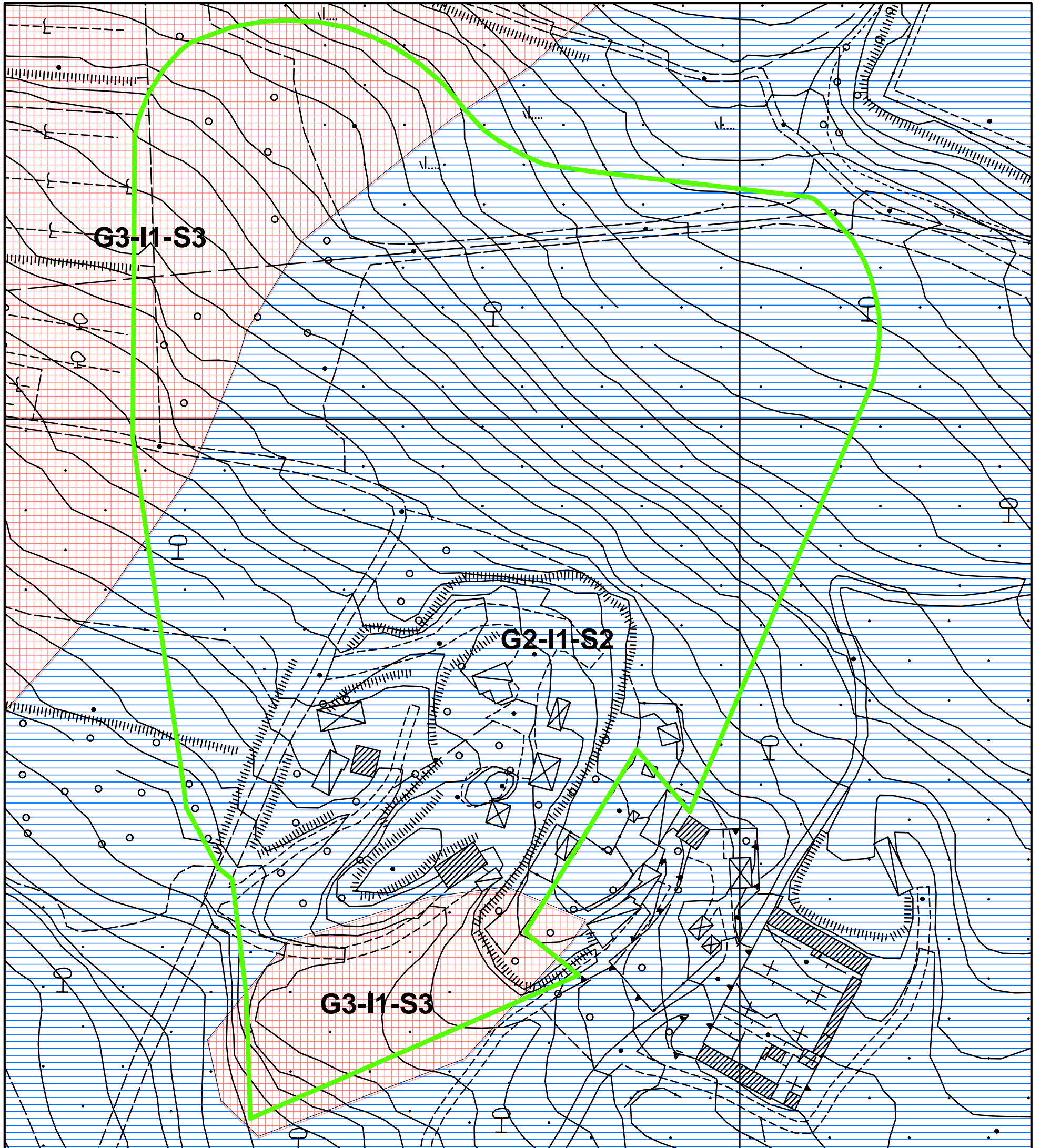
Legenda	
	Proposta presentata dal Consorzio S. Brigida
	PF3 - pericolosità elevata






024 8 1216
 Meters

Elaborato n°7

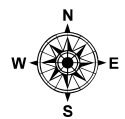
CARTA DELLA PERICOLOSITA' GEOMORFOLOGICA, IDRAULICA E SISMICA



Legenda

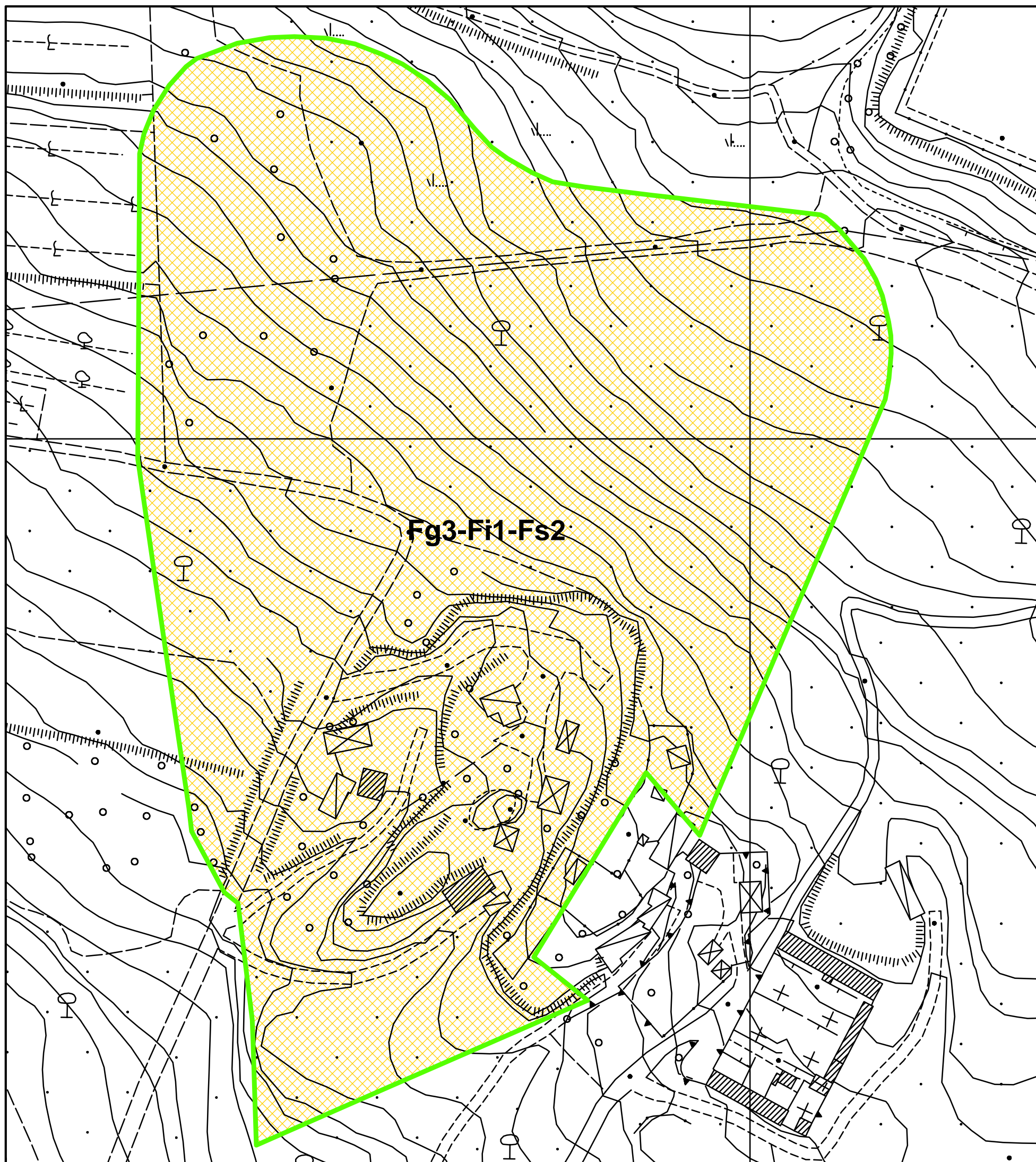
-  Proposta presentata dal Consorzio S. Brigida
-  G2-I1-S2 - Pericolosità geomorfologica media, pericolosità idraulica bassa e pericolosità sismica locale media.
-  G3-I1-S3 - Pericolosità geomorfologica elevata, pericolosità idraulica bassa e pericolosità sismica locale elevata.

0,5 10 15 20
Meters





Elaborato n°8

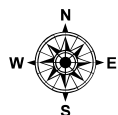
CARTA DELLA FATTIBILITA'



Legenda

-  Proposta presentata dal Consorzio S. Brigida
-  Fg3-Fi1-Fs2, Fattibilità geomorfologica condizionata, sismica con normali vincoli e idraulica senza particolari limitazioni

0 5 10 20 30 40
Meters



Elaborato n°9

